



nexa

# Funding Opportunity

Climate and Health Innovation:  
Africa, Latin America, and the Caribbean

Applications open: June 22, 2026

Deadline to apply: July 22, 2026



# Overview

Health is the human face of climate change. Its impacts are accelerating – from worsening air quality and deadly heatwaves to rising infectious diseases. Vulnerable communities are hit hardest, yet mitigation and adaptation efforts remain underfunded and slow. Incremental solutions are no longer enough. We need bold, system-level innovation to build long-term resilience in health systems on the frontlines of climate change.

**Nexa**, a new climate and health innovation initiative co-led by [Grand Challenges Canada](#) and the [Science for Africa Foundation](#), in collaboration with a global consortium of partners and funders, leverages the proven Grand Challenges model to accelerate high-impact solutions at the nexus of climate and health. Its goal is to invest in bold, innovative approaches that enable local health actors to turn climate-driven health risk signals into timely health service delivery action. To understand Nexa’s funding focus (and how your proposed solution can address the specific challenge) please see [Section 2: Funding Focus](#).

As a locally guided and globally coordinated initiative, Nexa’s design was informed by the largest global climate and health survey, a comprehensive gap analysis, expert panel input, and strategic alignment with funder priorities. The initiative addresses real, on-the-ground climate-driven health priorities and leverages the strength of its global consortium to drive impact through coordinated investments, shared learning, and global network of partners. The global consortium of Nexa partners and funders includes but is not limited to Grand Challenges Canada, the Science for Africa Foundation, [Sanofi Foundation](#), [Novo Nordisk Foundation](#), the [Fund for Innovation in Development](#), and the [Global Grand Challenges Network](#). To understand more about Nexa’s partners and co-creation process, please see [Appendix A](#).

**Through this funding opportunity, Nexa will invest in innovations in Africa and Latin America & the Caribbean.** To find out more about the countries of focus in this funding call, please see [Section 1: Competition Rules](#) and [Appendix B](#).

**Through bold innovation and global collaboration, Nexa looks to build a healthier, more resilient future for communities at the frontlines of climate change.**

## What are we investing in?

- **Proof of Concept** innovations, meaning the testing of early-stage ideas, methods, or products. This is the stage where an innovation is field-tested in a real-world pilot to assess its potential for impact, as well as technical, operational, and financial viability. *For more detail on how Nexa defines Proof of Concept, please refer to this helpful guide: [Our Investment Approach](#).*
- **Transition to Scale** innovations, meaning approaches that have already been tested, proven to be effective, and are now ready to be implemented more widely. **Those without sufficient and relevant proof of concept evidence are strongly advised not to apply for Transition to Scale funding and instead consider applying for Proof of Concept funding.** *For more detail on how Nexa defines Transition to Scale, please refer to this helpful guide: [Our Investment Approach](#).*
- You can find the full evaluation criteria in [Appendix C](#).

## What is the funding type?

While we expect that the majority of investments will be made through grant funding, we may choose to deploy debt and equity investments aligned to organization type, company stage, and sustainability plan.

**NOTE:** Successful applicants may receive funding from any one (or combination) of the Nexa partners. This will be confirmed later in the selection process.

## What is the funding amount?

- **Proof of Concept** investment amounts are up to \$200,000 USD per innovation.
- **Transition to Scale** investment amounts will range between approximately \$250,000 - \$2,000,000 USD per innovation at the Nexa partners' discretion, depending on the maturity of the innovation.

**NOTE:** While funding amounts are listed here in USD, the currency of awards will vary depending on which Nexa partner is providing funding. For successful applicants, details on the currency of awards will be discussed later in the selection process.

## What is the funding duration?

- The Proof of Concept investment period available is 18 to 24 months.
- The Transition to Scale investment period available is up to a maximum of 24 months (for initial investments). Shorter durations are welcome.

## Who can apply?

- Organizations that are incorporated or equivalent (e.g. companies, social enterprises, non-governmental organizations, non-profit, for-profit, research/academic institutions).
- However, individuals, sole proprietorships, unincorporated trusts, and partnerships are not eligible to apply.

**NOTE:** For Proof of Concept funding, applicant organizations **MUST** be incorporated or equivalent in Africa or Brazil (see the complete list of countries in [Appendix B](#)). For Transition to Scale funding, applicant organizations can be incorporated or equivalent in any country.

## What is the application deadline?

**All proposals must be submitted via the [Fluxx](#) portal by **July 22, 2026, at 2:00 p.m. ET (6:00 p.m. UTC).****

## How to apply:

**Applications must be submitted via [Grand Challenges Canada's online portal \(Fluxx\)](#).** We will not accept applications submitted via any other channel.

**Apply now: <https://gcc.fluxx.io>**

**NOTE:** *Following the application deadline of July 22, 2026 at 2:00 p.m. ET (6:00 p.m. UTC), we will no longer accept independent submissions. After that date, this Funding Opportunity will enter an invitation-only phase for Transition to Scale where applicants must be invited to submit. This invitation-only phase will be indefinite and may be closed at any time without notice. We may extend invitations to previous or current grantees of any of the Funding Partners, as well as external innovators whose work meets a Funding Partner's priorities, at our discretion.*



# Table of Contents

## Overview

What are we investing in?.....	3
What is the funding type?.....	3
What is the funding amount?.....	3
What is the funding duration?.....	4
Who can apply?.....	4
What is the application deadline?.....	4
How to apply?.....	4

1

## Eligibility Criteria and Competition Details

Who can apply?.....	7
Who cannot apply?.....	7
Is your organization the right fit for this funding call?.....	7
Connection to Communities.....	8
Competition rules.....	8

2

## Funding focus

Areas of Focus.....	12
Expectations by Award Type.....	14
Priority Health Outcomes.....	15
Our Investment Approach.....	16

3

## How to Apply

When?.....	17
Where should I apply?.....	17
What to expect after submitting an application.....	17
Questions?.....	21



# Table of Contents

## Appendix A: Who we are

- About Nexa.....22
- Nexa’s Co-Creation Process.....21
- Nexa’s Co-leadership Model.....23
- About Grand Challenges Canada.....23
- About the Science for Africa Foundation.....23
- Nexa’s Climate-Innovation Framework.....24
- Key Definitions.....27

## Appendix B: Eligible Countries

- Proof-of-Concept.....28
- Transition-to-Scale.....29

## Appendix C: How we Review Applications

- Proof-of-Concept.....31
- Transition-to-Scale.....33

## Appendix D: Additional Terms

- Submission Materials and Privacy Notice.....35
- Warranty.....37
- Funding Opportunity Terms.....37
- Costs.....38
- Governing Law.....38
- Risk Management, Safety, Anti-Terrorism, Anti-Corruption, Anti-Bribery.....38
- Activities & Deliverables.....39
- Funder Compliance Terms.....39
- Financing Terms.....40
- Guidance on the use of generative AI in our funding processes.....40



# 1. Eligibility criteria and competition details

## Who can apply?

Organizations that are incorporated or equivalent (e.g. companies, social enterprises, non-governmental organizations, governmental organizations, non-profit, for-profit, research/academic institutions).

**NOTE:** For Proof of Concept funding, applicant organizations **MUST** be incorporated or equivalent in Africa or Brazil (see the complete list of countries in [Appendix B](#)). For Transition to Scale funding, applicant organizations can be incorporated or equivalent in any country.

## Who cannot apply?

Individuals, sole proprietorships, unincorporated trusts, and partnerships. United Nations agencies and their country offices are also ineligible.

## Is your organization the right fit for this funding call?

Your organization must **[1]**:

- Be formed and legally incorporated**[2]** or its equivalent as a legal person (organization)
- Be active and in good standing with respective registration body/bodies**[3]**
- Be the intended funding recipient
- Be capable of entering into a funding agreement with any one (or multiple) of the Nexa partner(s)
- Be able to successfully perform activities in its technical area
- Have the capacity and internal and legal/regulatory approvals necessary to receive and administer funding from any one (or combination) of the Nexa partners.

**[1]** The following must apply to the entity under its current name.

**[2]** The meaning of 'legally incorporated' will vary across different jurisdictions. It is the responsibility of every applicant to understand how this applies to their own jurisdiction. Typically, 'legally incorporated' means that the entity is incorporated as its own legal person (having separate and distinct legal identity), can enter into binding contracts, can own property in its own name, can sue and be sued, etc. For example: Local registration of an international non-profit would not meet this eligibility requirement in most jurisdictions.

Unincorporated trusts or partnerships, or any business structure that places liability on an individual or individuals, would not meet this eligibility requirement. However, an incorporated trust or incorporated partnership (sometimes a limited liability partnership in certain jurisdictions) would be eligible.

**[3]** Where relevant, required filings (such as regular reports or tax filings) related to institutional incorporation or registration are up to date. The registration body in question should be, in jurisdictions where relevant, the governing authority for your entity type according to the country's laws.

## Connection to Communities

Nexa invests in innovations that are culturally sensitive and community driven. When making investment decisions, we seek to understand the extent to which innovations are informed by, co-designed with, and implemented by/in partnership with affected communities. To this end, we assess whether innovations are:

1. Community owned: leadership team from and based in affected/target community
2. Community led: leadership team from but not based in affected/target community OR members of management team from and based in affected/target community
3. Community partnered: local presence and collaborative or consultative engagement with affected/target community/community organization(s)
4. Community linked: local presence and affected/target community informed OR no local presence, but partnership with affected/target community organization(s)
5. Not meaningfully connected to the community

In order to be considered eligible for this funding opportunity, applicants must demonstrate that their innovation is, at a minimum, community linked.

For more details on Nexa's commitment to connection to communities, please refer to this helpful guide: [Our Investment Approach](#).

## Competition rules

### Implementation countries:

1. Proof of concept:
  - **Africa:** Proposed innovations must be implemented in countries listed in [Appendix B](#)
  - **Latin America & the Caribbean:** ONLY open to innovations implemented in Brazil
2. Transition to Scale:
  - **Africa:** Proposed innovations must be implemented in countries listed in [Appendix B](#)
  - **Latin America & the Caribbean:** Proposed innovations must be implemented in countries listed in [Appendix B](#)

**Innovations that are implemented outside of these countries of focus will NOT be considered.**

### Intellectual Property:

Selected applicants will be required to align with the access and sharing of intellectual property policies of the relevant contracting Nexa partner(s).

Innovators will continue to own their intellectual property. For selected innovators, details on intellectual property requirements will be discussed later in the selection process.

### **Project Lead:**

- An application's Project Lead must be formally affiliated with the applicant organization
- The Project Lead should be a key member of the project team
- A Project Lead can only be listed on one (1) application (Note: an organization can submit multiple applications, but each needs a different Project Lead)

### **Language:**

**Applications must be submitted in English or French**

**Note:** the quality of the English or French language in an application will not play a factor in the evaluation of the application unless it affects the clarity of the information

### **Completeness:**

Only applications that include all required information and answers to all questions will be considered.

### **Format:**

Only applications submitted via Grand Challenges Canada's [Fluxx](https://gcc.fluxx.io) portal will be considered. (<https://gcc.fluxx.io>).

For additional information on the Nexa partners' expectations, as well as terms and conditions for this Funding Opportunity, please refer to [Appendix D](#).





## 2. Funding focus

The climate crisis is creating new human health threats, amplifying existing health challenges, exacerbating inequities, and placing additional pressure on already overburdened health systems.

The climate-driven health threats that are increasingly driving morbidity and disrupting routine care include shifting vector-borne infection patterns, as temperatures and rainfall patterns change transmission dynamics, and extreme heat and poor air quality events that increase acute and chronic health harms. These disproportionately impact vulnerable populations, including pregnant women, those suffering from chronic disease, children, the elderly, and underserved communities facing barriers to access.

Local health actors are insufficiently equipped to anticipate and respond to climate-driven health risks. This gap persists because actionable climate–health intelligence is not routinely and reliably available or usable locally, decision triggers and protocols are not embedded in workflows, and fit-for-context tools and delivery capacity are often unreliable, especially under climate stress.

**We seek bold, innovative solutions that enable local health actors to turn climate-driven health risk signals into timely health service delivery action, reducing health harms from mosquito-borne infections, extreme heat, and poor air quality.** (See Figure 2 on page 13)

These solutions must be climate-driven health innovations that are intentionally designed to address a health-related impact of climate change, where the issue is caused or significantly influenced by climate risks. Furthermore, climate change as a risk multiplier is a central consideration of the innovation’s design, functionality, and deployment. In order to be considered relevant to this Nexa funding call, innovations must meet the Nexa definition of climate-integrated or climate-centred - see Figure 1 on the next page for detail.

## Figure 1. Degree of climate risk considerations relevant for Nexa funding

Climate Phase	Climate-Integrated	Climate-Centred
<b>Definition</b>	<p>Innovation was originally a health solution but has been fundamentally re-engineered because it is significantly climate-sensitive. Climate change now significantly informs the innovation's core design, function and deployment.</p>	<p>Innovation created in direct response to a health problem caused or intensified by climate change. It introduces a new solution to address these climate-driven impacts, with climate shaping the innovation's core purpose, design, function, and deployment.</p>
<b>Guidelines</b>	<ul style="list-style-type: none"> <li>• Originally developed as an innovation to a health problem that has become significantly climate sensitive due to climate change.</li> <li>• Demonstrate a clear understanding of how climate change shifts the health problem and impacts the innovations performance.</li> <li>• Re-engineered so climate factors shape the core design, functioning, and deployment.</li> <li>• May be:               <ul style="list-style-type: none"> <li>◦ Piloting or testing climate-integration at the core of the innovation in a limited or controlled setting, OR</li> <li>◦ Fully incorporate a proven climate-integrated core innovation</li> </ul> </li> <li>• Some planetary health considerations in design, function, and deployment (where applicable).</li> <li>• Innovation could still exist without climate change.</li> </ul>	<ul style="list-style-type: none"> <li>• Originates in a climate-driven health problem that requires new solutions.</li> <li>• Climate impacts are the primary reason the innovation exists.</li> <li>• Climate factors directly shape the innovation's core purpose, design, functioning, and deployment.</li> <li>• Innovation would not exist without climate change</li> <li>• Planetary health considerations in design, functioning, and deployment (where applicable)</li> </ul>
<b>Examples</b>	<ul style="list-style-type: none"> <li>• Chronic disease patient care program redesigned to include extreme heat thresholds to trigger modified care plans, medication, and patient outreach</li> <li>• RDT enhancement to function in high heat and humidity</li> <li>• Existing EWS system that include climate and weather data into the operation of the model to better inform the response pathway</li> </ul>	<ul style="list-style-type: none"> <li>• Climate-triggered health system outbreak response</li> <li>• Climate-driven continuity of care models in climate shocks and stressors</li> <li>• 'Newer' vector management strategies that is more climate-resilient</li> </ul>

**NOTE:** We strongly encourage all applicants to review the full details of Nexa's climate-innovation framework (in [Appendix A: Who We Are – Section D: Nexa's Climate-Innovation Framework](#)) to ensure alignment with and relevance to the specific interest of the Nexa initiative and its funding.

## Areas of Focus

Applications must directly address at least one of the following areas of focus:



### 1. Climate-informed early warning and monitoring systems:

Innovations that allow health actors to anticipate and respond to the impacts of heat, poor air quality, and/or changing mosquito ecology (resulting in the accelerated spread of malaria and dengue infections).

- Innovations should aim to integrate weather and climate data with health data to forecast climate-related health risks and drive surveillance and health services delivery actions.
- Innovations may leverage artificial intelligence, digital health tools, and other technologies.

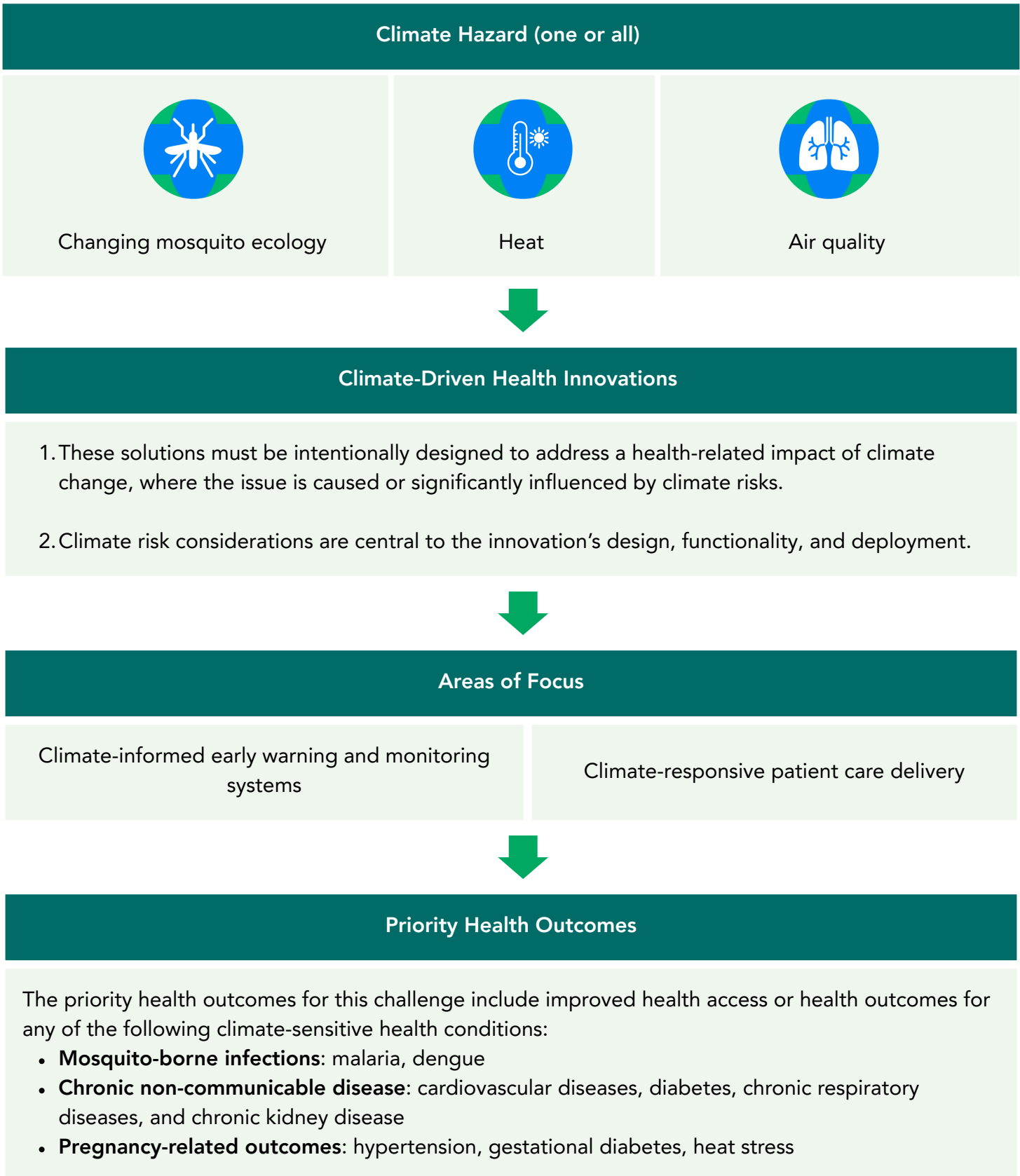


### 2. Climate-responsive patient care delivery: Innovations that strengthen local response to mosquito-borne infection harms, and/or the health impacts of heat and poor air quality.

- Includes innovations that support triage, diagnosis, treatment, and continuity of care, particularly for those living with climate-sensitive chronic non-communicable disease, children, the elderly, and pregnant women.
- Includes climate-smart solutions that are functional in lower-resourced settings and under extreme weather conditions, particularly extreme heat and humidity.

**NOTE:** *The climate-sensitive chronic non-communicable diseases of interest for Nexa are cardiovascular diseases, diabetes, chronic respiratory diseases, and chronic kidney disease. Solutions that address other chronic non-communicable diseases (NCDs) will not be considered relevant for this funding call.*

Figure 2. Nexa Funding Scope



## Other considerations:

- We are most interested in solutions that are rooted in local knowledge and guided by community priorities. (See [Connection to Communities in Section 1 – Eligibility Criteria](#) and [Competition Details](#))
- We encourage innovations that prioritize populations disproportionately vulnerable to the health impacts of mosquito-borne infections (malaria and dengue), heat, and poor air quality, including children, the elderly, pregnant women, and people living with climate-sensitive chronic non-communicable diseases<sup>[4]</sup>.
- We also encourage solutions that address the needs of high-risk and underserved populations, including rural communities, Indigenous peoples, those living in informal settlements, and populations affected by conflict.
- We encourage innovative solutions that consider their environmental impact. Where possible, solutions should aim to apply climate-mitigating measures to limit environmental footprint.

## Expectations by Award Type

All proposals must present a well-thought-out rationale that explains how the innovation design and implementation have the potential to meaningfully improve priority outcomes and address current gaps.

**Proof of Concept:** Proof of Concept proposals are not required to have a pre-existing evidence base for their innovation idea. Nexa is looking for new, untested, and bold ideas. Innovations that receive proof of concept awards will be supported to generate an evidence base. At proof of concept, this may include a greater focus on generating evidence on the performance, operational feasibility, acceptability, and buy-in of their innovation, in addition to generating early signals of health impact.

**Transition to Scale:** Transition to Scale proposals must present pre-existing evidence demonstrating the innovation’s feasibility, effectiveness and early signals of impact on priority outcomes. **Those without sufficient and relevant proof-of-concept evidence are strongly advised not to apply as they will not be considered relevant.** During Transition to Scale, innovators will be supported to further build upon this evidence base, with a greater focus on robust and rigorous evaluation approaches to validating health impact in context of one or more climate hazards.

<sup>[4]</sup> Climate-sensitive chronic non-communicable diseases of interest are: cardiovascular diseases, diabetes, chronic respiratory diseases, and chronic kidney disease.

## Priority Health Outcomes

Innovators will be required to develop robust MEL (monitoring, evaluation and learning) plans designed to demonstrate whether their innovation idea has a measurable and meaningful impact on health outcomes relevant to their focus area.

Innovators should consider their theory of change when proposing the relevant health outcomes their innovation will impact. For instance, while a specific innovation product may be designed to generate early warning insights for heat events, the innovator should consider the responsive actions expected by the health system and local health actors, and the corresponding impact on the care received by those living with climate-sensitive NCDs. Technical or operational outcomes related to the performance of the early warning system on generating alerts would not alone suffice. The ultimate impact of the technology on health access and/or outcomes needs to be understood.

**Therefore, the priority health outcomes for this challenge includes improved health access or health outcomes for any of the following climate-sensitive health conditions:**

- Mosquito-borne infections: malaria and dengue
- Non communicable diseases: cardiovascular disease, diabetes, chronic respiratory disease and chronic kidney disease
- Pregnancy related outcomes: hypertension, gestational diabetes, heat stress

This can be demonstrated through improved access (e.g., reaching more people, improving timeliness of care), or effectiveness of climate responsive solutions on health outcomes, as it relates to the prevention, diagnosis, monitoring and/or treatment of these conditions.

Examples of priority health outcomes follow. These examples are for illustrative purposes only. Innovators should focus on defining the most relevant priority outcome(s) for their innovation, where they expect to drive meaningful impact.

- Improved access (including timeliness of access) to prevention, diagnosis, treatment or management of a relevant and specific health condition
- Increased number of individuals received adaptive treatment/management plans that are responsive to one or more climate hazards
- Increased number of at-risk individuals benefitting from a health service delivery action that is enacted in response to climate-informed early warning and monitoring system
- Reduced risk of infection, complication or hospitalization from malaria or dengue infections
- Reduced risk of climate-driven health complication, hospitalization, or morbidity in pregnancy (e.g. resulting from hypertension, gestational diabetes, heat stress, etc.)

- Reductions in morbidities or hospitalization rates or complications experienced by individuals with chronic health conditions, including cardiovascular disease, diabetes, chronic respiratory diseases, chronic kidney disease

Importantly, innovators should also consider how they will demonstrate the climate-adaptiveness of their innovation. This includes assessing priority outcomes temporally and understanding how the innovation performance in the context of climate hazards, including changing mosquito ecology, worsening air quality and increasing heat events. This could in part, be facilitated through focus on critical intermediary outcomes, that monitor the impact of the innovation on the responsiveness of the local health system and actors.

Examples of intermediary health outcomes:

- Improved capacity of local health actors to interpret and act on climate-sensitive risk signals
- Increased ability of health systems to adapt services during climate risk periods (e.g., surge capacity, outreach, targeted interventions)
- Improved timeliness and effectiveness of health system responses to climate risk signals
- Improved continuity of essential health services during climate risk signals

Innovators are expected to generate rigorous evidence showing how their solutions contribute to meaningful improvements in health outcomes. (For TTS applicants, this includes addressing any gaps in the evidence base.) Nexa welcomes proposals for a range of evaluation approaches, including observational study design, mixed methods research, quasi-experimental study designs, and Randomized Controlled Trials (RCTs)<sup>[5]</sup>. Proposals to this funding opportunity will not be prioritized based on their intended research method but we do expect innovators to provide a clear rationale for their proposed approach. For more detail on Nexa’s Monitoring, Evaluation, and Learning expectations and requirements for Proof of Concept and Transition to Scale, please refer to this helpful guide: [Our Investment Approach](#).

## Our Investment Approach

For greater insight into Nexa’s investment approach and the types of innovations we seek to support, we strongly encourage applicants to review the [Our Investment Approach](#) page.

<sup>[5]</sup> A note on Randomized Controlled Trials (RCTs): RCTs represent a gold-standard approach to establishing attribution of impact, and in the development sector, have proven to be feasible across a diverse range of contexts, sectors and innovation types. While not a requirement of TTS funding, Nexa welcomes RCT proposals when appropriate to an innovator’s plan based on the evidence base and objectives of their proposal.



# 3. How to apply

## When?

All proposals must be submitted by July 22, 2026, at 2:00 p.m. ET (6:00 p.m. UTC)

Applicants are encouraged to register early to familiarize themselves with the [Fluxx](#) portal and application form and to help avoid potential last-minute issues, which we cannot guarantee to resolve prior to the deadline. Late submissions will not be accepted.

## Where?

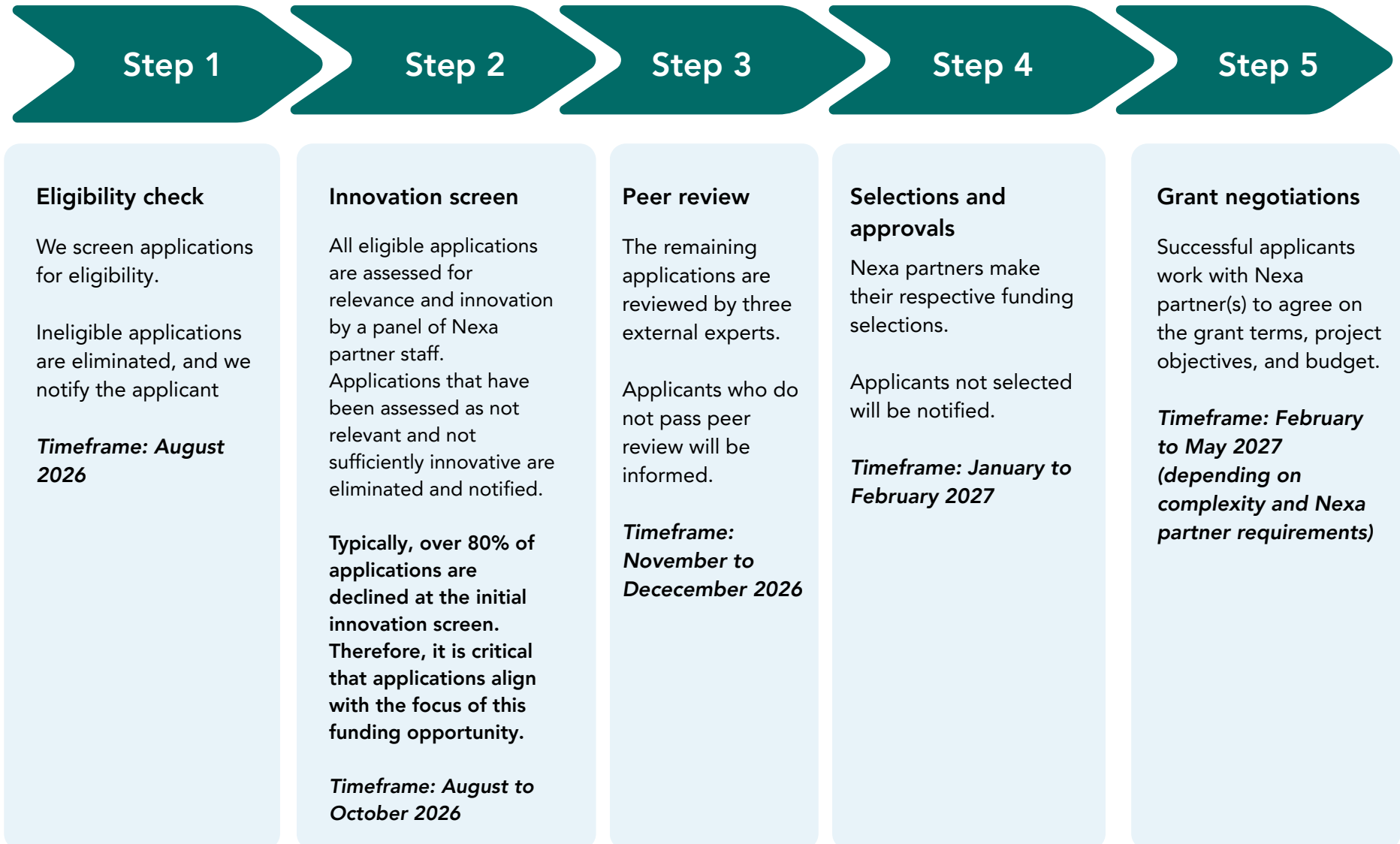
You must submit your application via Grand Challenges Canada's online application portal, Fluxx: <https://gcc.fluxx.io>. We will not accept applications submitted via any other channel.

Please visit our [How to Apply](#) page for guidance.

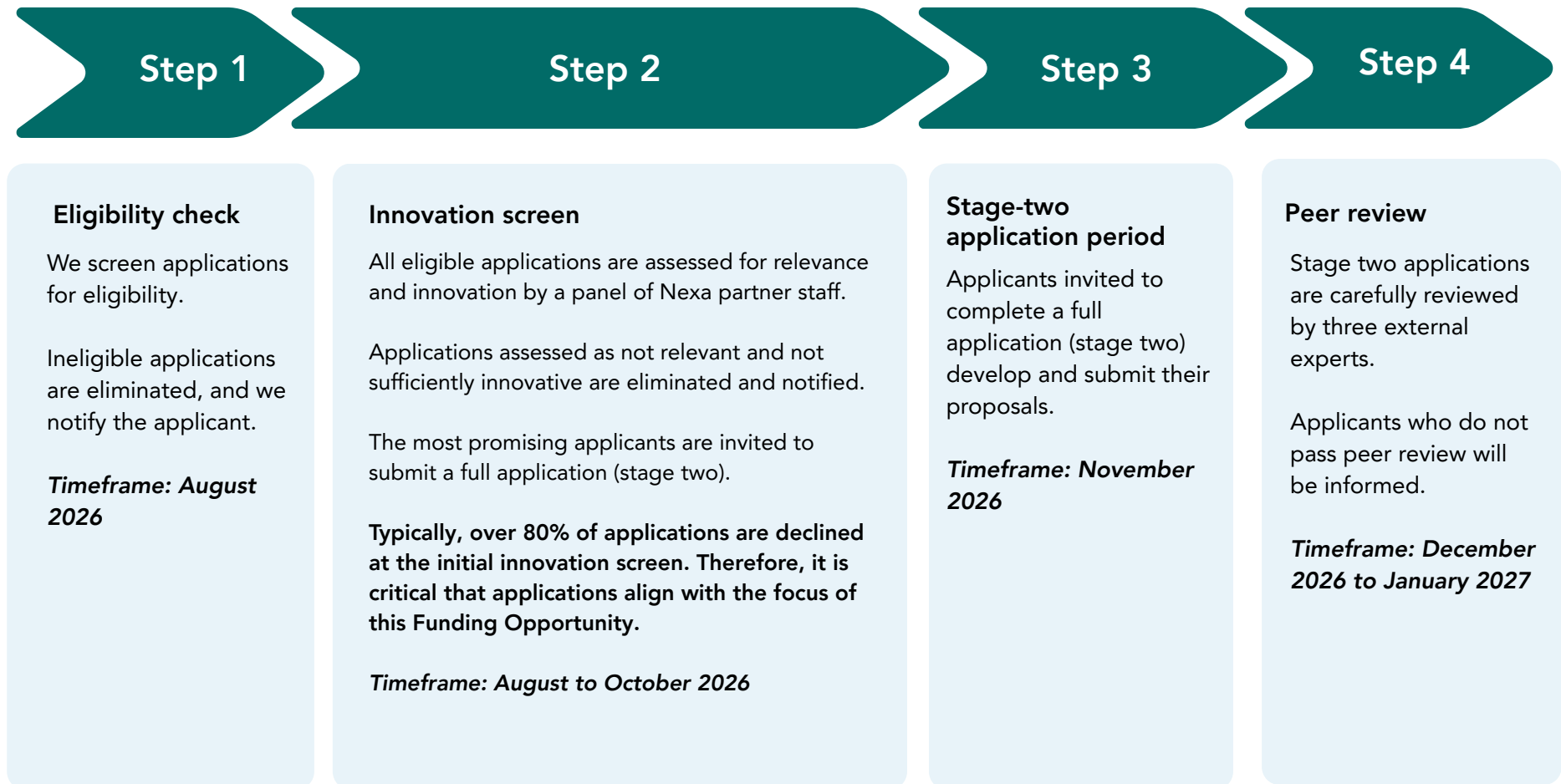
## What to expect after submitting an application

You can find the full evaluation criteria we will use to review submitted proposals in [Appendix C: How We Review Applications](#).

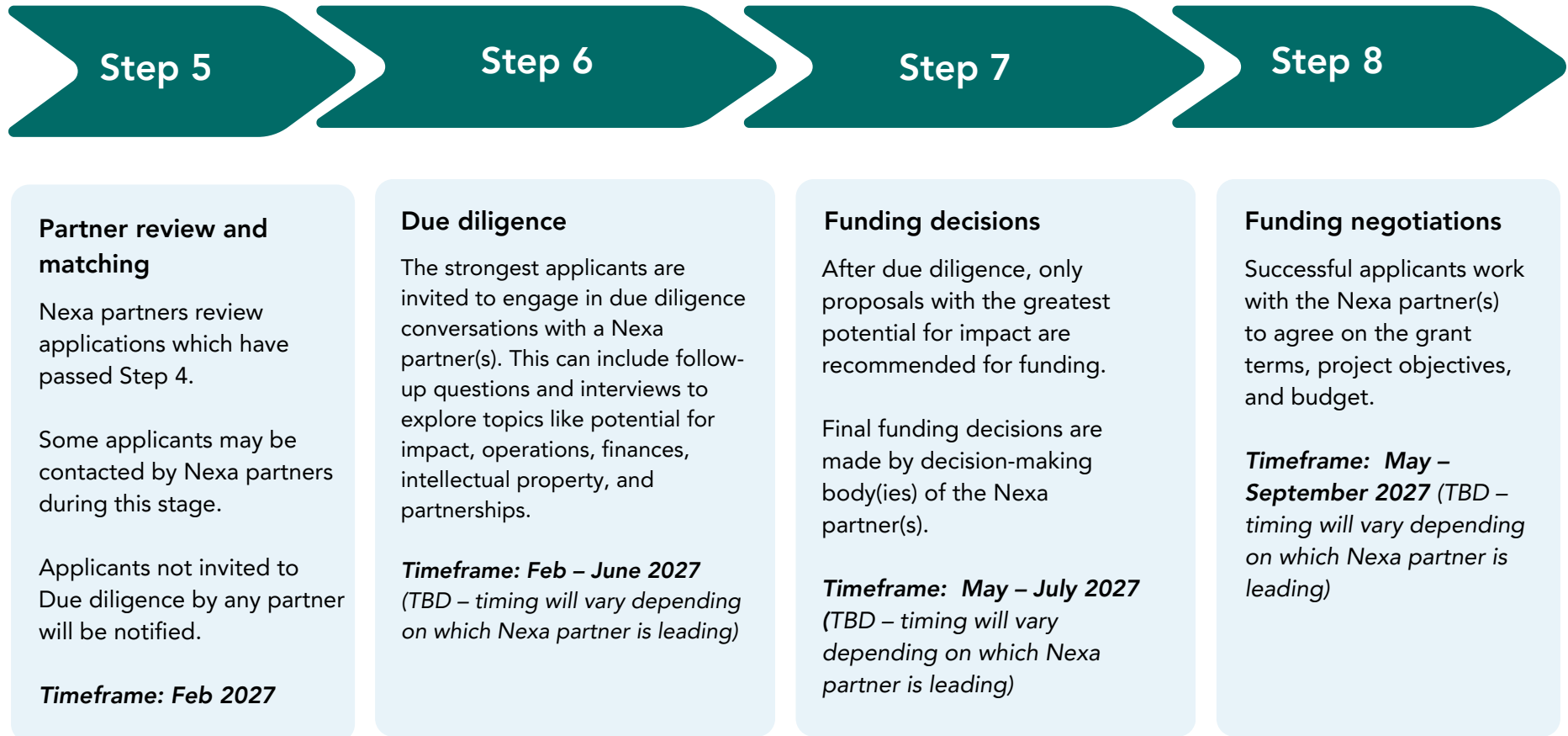
Overview of our **Proof of Concept** review and selection process:



Overview of our **Transition to Scale** review and selection process:



## Overview of our **Transition to Scale** review and selection process:





## Questions?



For more information about Nexa, please visit [www.nexaclimate.org](http://www.nexaclimate.org)



For more information about this Nexa funding opportunity:

- Please visit the [Apply for Funding](#) page on our website for:
  - Information about our Applicant Information Session
  - [Guidance on How to Apply](#)
  - More information on Nexa's investment approach via Grand Challenges Canada's helpful guide: [Our Investment Approach](#)
  - [Innovator Resources](#)
- For anything not addressed through this Funding Opportunity document or the above resources (including the applicant Q&A session), reach out to [OpenCompetitions@grandchallenges.ca](mailto:OpenCompetitions@grandchallenges.ca)



For technical issues related to the Fluxx portal, which are not addressed in the [Fluxx Reference Guide](#), go to [Fluxx Support](#).

## Appendix A: Who we are

### A. About Nexa

Nexa is a global climate and health initiative co-led by Grand Challenges Canada (in partnership with the Government of Canada) and the Science for Africa Foundation and supported by a consortium of funding partners, which include but are not limited to Sanofi Foundation, Novo Nordisk Foundation, the Fund for Innovation in Development, and the Global Grand Challenges Network. Drawing on insights from the largest-ever global climate and health survey, Nexa backs bold, locally-led innovations that support health actors, communities and health systems to anticipate and adapt to climate-related health threats, including mosquito-borne infection, heat, and poor air quality.

Through a focus on resilience and adaptation, Nexa supports solutions that include climate-informed early warning and monitoring systems and digital health tools, and climate-responsive patient care delivery, including climate-smart diagnostics.

### Nexa's Co-Creation Process

Nexa's co-creation process began with developing a global climate and health survey aimed at identifying the most urgent climate-related health challenges in low- and middle-income countries. Launched in January 2025 by Grand Challenges Canada, in partnership with Science for Africa Foundation, The Geneva Learning Foundation, and the Global Grand Challenges Network, the survey gathered insights from over 6400 health and humanitarian actors at the frontlines of the climate crisis in 107 countries, making it the largest global climate and health survey ever conducted. Furthermore, to review and validate the results of the global climate and health survey, Grand Challenges Canada consulted an Expert Panel composed of 22 global scientific experts from 14 countries.

Building on the survey's identified top health threats, Grand Challenges Canada undertook an extensive landscape analysis to identify areas with opportunities for innovation, where the global consortium could add meaningful value, and where alignment with funding size could drive impact and scale. As part of this process, insights were drawn from the 100+ climate and health innovations collectively funded by the Grand Challenge Network and the nearly 800 applications received through GCC's Stars in Global Health funding call. In addition, a diverse group of technical partners and funders were engaged to inform the direction of the initiative through their expertise and contextual knowledge.

Through this co-creation process, the partners and funders involved in the initiative's development arrived at Nexa's funding focus.

### **Nexa's Co-Leadership Model**

Nexa will operate under a local co-leadership model, with Grand Challenges Canada acting as the global lead. Grand Challenges Canada will also work in close collaboration with relevant strategic partners to provide leadership for Latin America & the Caribbean.

Science for Africa Foundation, as the co-lead for Africa, will direct and govern ecosystem engagement, learning activities, policy dialogue, and Communities of Practice for innovators in Africa.

### **B. Grand Challenges Canada**

Grand Challenges Canada is one of the world's leading impact-first investors. Our innovation platform supports Bold Ideas with Big Impact® that drive better health, equity, and resilience around the globe. With support from the Government of Canada and other partners, we focus on funding bold ideas that have the potential to save and improve lives in underserved communities.

Over the past 15 years, we've invested in more than 1,600 unique innovations across 100+ countries. Learn more about how we're working toward a world where innovation helps everyone thrive: [www.grandchallenges.ca](http://www.grandchallenges.ca).

### **C. Science for Africa Foundation**

The Science for Africa Foundation is a pan-African, non-profit organisation that supports, strengthens, and promotes science and innovation in Africa. The Science for Africa Foundation seeks to address the continent's most pressing developmental needs by generating knowledge that solves problems and informs decision-making.

SFA Foundation serves Africa's research and innovation ecosystem in two ways:

- **By Designing, Funding and Oversight of programmes:** SFA Foundation's approach places emphasis on African-led priorities and solutions, strengthening conducive environments for scientists to thrive and produce quality research, broad multi-stakeholder engagement, equitable partnerships and collaborations and the promotion of actionable scientific excellence in policy, knowledge and practice arenas.
- **By Convening, Forging Strategic Partnerships and Strengthening Networks:** We recognize the power of collective effort and are intentional and proactive in the development, maintenance and growth of equitable strategic partnerships and networks. We aim to co-create solutions via dialogue and prioritize long-term ownership and sustainability. [www.scienceforafrica.foundation](http://www.scienceforafrica.foundation)

**D. Nexa’s Climate-Innovation Framework**

This framework outlines how Nexa defines **climate-driven health innovations**. This framework covers a continuum of climate innovation from incremental to transformative.

**Figure A1-Climate-driven health innovations of interest to Nexa:**

Climate Phase	Climate-Integrated	Climate-Centred
<p><b>Definition</b></p>	<p>Innovation was originally a health solution but has been fundamentally re-engineered because it is significantly climate-sensitive. Climate change now significantly informs the innovation's core design, function and deployment.</p>	<p>Innovation created in direct response to a health problem caused or intensified by climate change. It introduces a new solution to address these climate-driven impacts, with climate shaping the innovation’s core purpose, design, function, and deployment.</p>
<p><b>Guidelines</b></p>	<ul style="list-style-type: none"> <li>• Originally developed as an innovation to a health problem that has become significantly climate sensitive due to climate change.</li> <li>• Demonstrate a clear understanding of how climate change shifts the health problem and impacts the innovations performance.</li> <li>• Re-engineered so climate factors shape the core design, functioning, and deployment.</li> <li>• May be:               <ul style="list-style-type: none"> <li>◦ Piloting or testing climate-integration at the core of the innovation in a limited or controlled setting, OR</li> <li>◦ Fully incorporate a proven climate-integrated core innovation</li> </ul> </li> <li>• Some planetary health considerations in design, function, and deployment (where applicable).</li> <li>• Innovation could still exist without climate change.</li> </ul>	<ul style="list-style-type: none"> <li>• Originates in a climate-driven health problem that requires new solutions.</li> <li>• Climate impacts are the primary reason the innovation exists.</li> <li>• Climate factors directly shape the innovation’s core purpose, design, functioning, and deployment.</li> <li>• Innovation would not exist without climate change</li> <li>• Planetary health considerations in design, functioning, and deployment (where applicable)</li> </ul>
<p><b>Examples</b></p>	<ul style="list-style-type: none"> <li>• Chronic disease patient care program redesigned to include extreme heat thresholds to trigger modified care plans, medication, and patient outreach</li> <li>• RDT enhancement to function in high heat and humidity</li> <li>• Existing EWS system that include climate and weather data into the operation of the model to better inform the response pathway</li> </ul>	<ul style="list-style-type: none"> <li>• Climate-triggered health system outbreak response</li> <li>• Climate-driven continuity of care models in climate shocks and stressors</li> <li>• ‘Newer’ vector management strategies that is more climate-resilient</li> </ul>

Figure A2 - Differential factors of climate-integrated and climate-centred health innovations:

Differential Factors	Climate-Integrated	Climate-Centred
<b>Origin</b>	Started as a health problem that became significantly climate-sensitive	Created because of climate-driven health problems intensified or emerged
<b>Reason it Exists</b>	Health innovation re-engineered to remain effective in the face of climate change	Climate change impacts are the primary reason the innovation exists
<b>Role of Climate in Innovation</b>	Climate factors shape the core design, function, and deployment, but the original health purpose remains	Climate change factors shape the core purpose, design, function, and deployment from the outset.
<b>Dependency on Climate Change</b>	Could still exist without climate change	Would not exist without climate change
<b>Type of Solution</b>	Existing, re-engineered for climate	New solution created specifically for a climate-driven problem
<b>Climate Embeddedness</b>	Integration being tested or proven	Included from the start, climate-based innovation
<b>Planetary Health Considerations</b>	Some included where relevant	Included where relevant, may be more central

Figure A3 - Climate-innovation definitions:

Term	Definition
<b>Core Innovation</b>	The central solution, main idea, and approach that directly creates the impact. It is separate from delivery or support components. It is the feature that makes the solution innovative, and if removed, the solution would no longer be the same.
<b>Innovation Component</b>	Added feature, tool, or activity that supports or strengthens the core innovation. It helps the main solution work better, but it is not essential to what the innovation is. If removed, it would not change the heart of the innovation.
<b>Purpose</b>	The main reason the innovation exists, the climate-driven health problem it aims to address or solve.
<b>Design</b>	How an innovation is built, what it aims to do, how it is meant to work, and how climate factors are taken into account.
<b>Function</b>	How the solution works in practice; the processes, actions, or mechanisms that allow it to create impact, including how it responds to climate conditions.
<b>Deployment</b>	How the solution is put into practice; how it is delivered and used in real-world settings, including how climate factors shape when, where, and how it is deployed.
<b>Innovation Performance</b>	How well the innovation achieves its intended results, its effectiveness and reliability, and how climate factors influence its performance.

## E. Key Definitions

**Mitigation[6],[7],[8]:** Actions taken to limit emissions (greenhouse gases) released into the atmosphere and/or decrease their current concentration in the atmosphere.

**Adaptation[9],[10]:** Actions taken to adjust ecological, social, or economic systems to respond to and prepare for the current or expected impacts of climate change.

**Resilience[11]:** The ability to prepare for, respond to, and recover from the impacts of climate change.

**Climate-smart solutions:** Solutions that are functional in lower-resourced settings and under extreme weather conditions, particularly extreme heat and humidity.

**Climate-sensitive mosquito-borne infection[12]:** Mosquito-borne infections (such as malaria and dengue) that strongly respond to changes in climate, resulting in changes to transmission and burden of disease.

**Climate-informed early warning and monitoring systems[13]:** An integrated end-to-end system that spans from monitoring, forecasting, and prediction to communication and preparedness, enabling various stakeholders to drive timely, informed health services delivery actions in the face of climate hazard events.

[6] United Nations Framework Convention on Climate Change (UNFCCC). (n.d.). Introduction to mitigation. [5] A note on Randomized Controlled Trials (RCTs): RCTs represent a gold-standard approach to establishing attribution of impact, and in the development sector, have proven to be feasible across a diverse range of contexts, sectors and innovation types. While not a requirement of TTS funding, Nexa welcomes RCT proposals when appropriate to an innovator's plan based on the evidence base and objectives of their proposal.

[7] United Nations Development Programme (UNDP). (n.d.). What is climate change mitigation and why is it urgent? [5] A note on Randomized Controlled Trials (RCTs): RCTs represent a gold-standard approach to establishing attribution of impact, and in the development sector, have proven to be feasible across a diverse range of contexts, sectors and innovation types. While not a requirement of TTS funding, Nexa welcomes RCT proposals when appropriate to an innovator's plan based on the evidence base and objectives of their proposal.

[8] Intergovernmental Panel on Climate Change (IPCC). (2022). Climate change 2022: Mitigation of climate change—Frequently asked questions (Chapter 1). [5] A note on Randomized Controlled Trials (RCTs): RCTs represent a gold-standard approach to establishing attribution of impact, and in the development sector, have proven to be feasible across a diverse range of contexts, sectors and innovation types. While not a requirement of TTS funding, Nexa welcomes RCT proposals when appropriate to an innovator's plan based on the evidence base and objectives of their proposal.

[9] United Nations Framework Convention on Climate Change (UNFCCC). (n.d.). Introduction to adaptation and resilience. [5] A note on Randomized Controlled Trials (RCTs): RCTs represent a gold-standard approach to establishing attribution of impact, and in the development sector, have proven to be feasible across a diverse range of contexts, sectors and innovation types. While not a requirement of TTS funding, Nexa welcomes RCT proposals when appropriate to an innovator's plan based on the evidence base and objectives of their proposal.

[10] Intergovernmental Panel on Climate Change (IPCC). (2022). Annex II: Glossary (V. Möller et al., Eds.). In H.-O. Pörtner et al. (Eds.), Climate change 2022: Impacts, adaptation, and vulnerability. Contribution of Working Group II to the Sixth Assessment Report of the Intergovernmental Panel on Climate Change (pp. 2897–2930). Cambridge University Press. [5] A note on Randomized Controlled Trials (RCTs): RCTs represent a gold-standard approach to establishing attribution of impact, and in the development sector, have proven to be feasible across a diverse range of contexts, sectors and innovation types. While not a requirement of TTS funding, Nexa welcomes RCT proposals when appropriate to an innovator's plan based on the evidence base and objectives of their proposal.

[11] Center for Climate and Energy Solutions (C2ES). (2019). What is climate resilience and why does it matter? [5] A note on Randomized Controlled Trials (RCTs): RCTs represent a gold-standard approach to establishing attribution of impact, and in the development sector, have proven to be feasible across a diverse range of contexts, sectors and innovation types. While not a requirement of TTS funding, Nexa welcomes RCT proposals when appropriate to an innovator's plan based on the evidence base and objectives of their proposal.

[12] Petridou, C., & Belfield, A. (2025). Impact of climate change and infectious diseases: Implications for healthcare providers in the UK. *Future Healthcare Journal*, 12(1), 100239. <https://doi.org/10.1016/j.fhj.2025.100239>

[13] United Nations Office for Disaster Risk Reduction. (2017). Early warning system. <https://www.unrrr.org/terminology/early-warning-system>

## Appendix B: Eligible countries

### PROOF OF CONCEPT

#### Africa:

Applicant organizations MUST be incorporated or equivalent in Africa.

Proposed Proof of Concept innovations MUST be implemented in one of more of the following countries:

- Algeria
- Angola
- Benin
- Botswana
- Burkina Faso
- Burundi
- Cabo Verde
- Cameroon
- Central African Republic
- Chad
- Comoros
- Democratic Republic of the Congo
- Republic of the Congo
- Cote d'Ivoire
- Djibouti
- Egypt
- Equatorial Guinea
- Eritrea
- Eswatini
- Ethiopia
- Gabon
- Gambia
- Ghana
- Guinea
- Guinea-Bissau
- Kenya
- Lesotho
- Liberia
- Libya
- Madagascar
- Malawi
- Mali
- Mauritania
- Mauritius
- Morocco
- Mozambique
- Namibia
- Niger
- Nigeria
- Rwanda
- São Tomé and Príncipe
- Senegal
- Seychelles
- Sierra Leone
- Somalia
- South Africa
- South Sudan
- Sudan
- Tanzania
- Togo
- Tunisia
- Uganda
- Zambia
- Zimbabwe

#### Latin America and the Caribbean:

Proof of Concept funding in Latin America and the Caribbean is **ONLY** open to applicant organizations incorporated or equivalent in Brazil.

Proof of concept innovations MUST be implemented in **Brazil**.

## TRANSITION TO SCALE

For Transition to Scale funding, applicant organizations can be incorporated or equivalent in any country.

### Africa:

Proposed Transition to Scale innovations **MUST** be implemented in one or more of the following countries:

- Algeria
- Angola
- Benin
- Botswana
- Burkina Faso
- Burundi
- Cabo Verde
- Cameroon
- Central African Republic
- Chad
- Comoros
- Democratic Republic of the Congo
- Republic of the Congo
- Cote d'Ivoire
- Djibouti
- Egypt
- Equatorial Guinea
- Eritrea
- Eswatini
- Ethiopia
- Gabon
- Gambia
- Ghana
- Guinea
- Guinea-Bissau
- Kenya
- Lesotho
- Liberia
- Libya
- Madagascar
- Malawi
- Mali
- Mauritania
- Mauritius
- Morocco
- Mozambique
- Namibia
- Niger
- Nigeria
- Rwanda
- São Tomé and Príncipe
- Senegal
- Sierra Leone
- Somalia
- South Africa
- South Sudan
- Sudan
- Tanzania
- Togo
- Tunisia
- Uganda
- Zambia
- Zimbabwe

## TRANSITION TO SCALE

### Latin America & the Caribbean:

Proposed Transition to Scale innovations MUST be implemented in one or more of the following countries:

- Argentina
- Belize
- Bolivia
- Brazil
- Colombia
- Costa Rica
- Cuba
- Dominica
- Dominican Republic
- Ecuador
- El Salvador
- Grenada
- Guatemala
- Guyana
- Haiti
- Honduras
- Jamaica
- Mexico
- Nicaragua
- Panama
- Paraguay
- Peru
- Saint Lucia
- Saint Vincent and the Grenadines
- Suriname
- Venezuela

## Appendix C: How We Review Applications

### PROOF OF CONCEPT:

Note: Proof-of-Concept will be a single stage application.

### Innovation Screen

Applications are screened for relevance to the call and innovativeness by Nexa partner staff. When we review submissions, we look for:

#### Proof of Concept

##### 1. Relevance:

- a. Does the proposed innovation align with the areas(s) of focus, as outlined in Section 2 of the Funding Opportunity?
- b. Does the proposed innovation seek to address relevant priority outcome(s) listed in Section 2 of the Funding Opportunity?
- c. Is the proposed innovation designed to address the needs of the affected population group, or a subset of this population, as outlined in Section 2 of the Funding Opportunity?
- d. To what extent is the project team appropriately connected to the local community they seek to serve?
- e. Does the proposed innovation qualify as a climate-driven health innovation under Nexa's definition (see appendix A, section D)?

##### 2. Innovation:

- a. Is the proposed idea innovative and does it present a better alternative over current approaches?

**NOTE:** Typically, over 80% of applications are declined at the initial innovation screen. Therefore, it is critical that applications align with the focus of this Funding Opportunity.

## Peer Review

The most innovative, relevant proposals are then reviewed by a panel of external experts. These experts are asked to consider the following...

### Proof of Concept

#### 1. Innovation:

- a. Does the proposed innovation align with the areas(s) of focus, as outlined in Section 2 of the Funding Opportunity?
- b. How bold, novel and/or how much of an improvement is the innovation over current approaches?
- c. How well does the innovation address/respond to the health impacts of climate change?

#### 2. Impact:

- a. Does the proposed solution have the potential to transform how the priority outcome(s), as outlined in Section 2 of the Funding Opportunity, is addressed?
- b. Is the proposed solution designed to generate meaningfully positive impacts on the target population?
- c. Is the monitoring, evaluation, and learning (MEL) plan sufficient to demonstrate Proof of Concept of the innovation by the end of the project period and within the resources provided?
- d. Is the proposed innovation designed with sustainability in mind and have they adequately considered barriers that might impact scalability?

#### 3. Execution Plan:

- a. Is the project technically sound and feasible within the funding amount and timeline?
- b. Does the proposed innovation apply to, as well as include, appropriate and meaningful involvement of the affected population?
- c. Is there a rigorous assessment of project risks, corruption risks, safety and security risks, and associated mitigation strategies?

#### 4. Project Team:

- a. Are the Project Lead, key team members and/or collaborators appropriately trained, experienced and positioned to carry out the design, implementation and assessment of the proposed Proof of Concept innovation in their target setting?
- b. To what extent are the project team and collaborators meaningfully connected to and/or have lived experience in relation to the populations and communities they seek to serve through this innovation?
- c. To what extent do the Project Lead and/or key team members demonstrate the experience and ability to successfully engage with relevant stakeholders? (e.g., community members, sector-specific actors, local authorities)

**Please Note:** We do not provide individualized feedback to applicants at Innovation Screen. Applicants that progress to Peer Review will receive written feedback from the panel of external expert peer reviewers following the conclusion of the review process.

## TRANSITION TO SCALE

### Stage 1: Innovation Screen

Applications are screened for relevance to the call and innovativeness by Nexa partner staff. When we review submissions, we look for:

#### Transition to Scale

##### 1. Relevance:

- a. Does the proposed innovation align with the areas(s) of focus, as outlined in Section 2 of the Funding Opportunity?
- b. Does the innovation and/or proposed scaling plan seek to address the key/priority outcomes described in Section 2 of the Funding Opportunity?
- c. Is the innovation designed to address the needs of the target population group, as outlined in Section 2 of the Funding Opportunity, or a subset of this population?
- d. To what extent is the project team appropriately connected to the local community they seek to serve?
- e. Does the proposed innovation qualify as a climate-driven health innovation under Nexa's definition (see appendix B)?
- f. Has the team achieved sufficient Proof of Concept results to demonstrate readiness for Transition to Scale funding? **Note: Those without sufficient and relevant proof of concept evidence are strongly advised not to apply for Transition to Scale funding**
- g. Has a realistic and sustainable path to achieve scale been defined?

##### 2. Innovation:

- a. Is the proposed idea innovative and does it present a better alternative over current approaches?

**Please Note:** *We do not provide individualized feedback to applicants at Stage 1: Innovation Screen. Applicants that progress to Stage 2: Peer Review will receive written feedback from the panel of external expert peer reviewers following the conclusion of the review process.*

**Note:** *NOTE: Typically, over 80% of applications are declined at the initial innovation screen. Therefore, it is critical that applications align with the focus of this Funding Opportunity.*

## Stage 2: Peer Review

The most innovative, relevant proposals will be invited to submit Stage 2 of the application. Stage 2 applications that demonstrate sufficient Proof of Concept evidence are then reviewed by a panel of external experts. These experts are asked to consider the following...

### Transition to Scale

#### 1. Innovation:

- a. Does the proposed solution align with the areas(s) of focus, as outlined in Section 2 of the Funding Opportunity?
- b. How bold, novel and/or how much of an improvement is the innovation over current approaches?
- c. How well does the proposed solution integrate different innovation types and/or approaches (scientific / technological, social and business innovation) to best ensure a novel and sustainable solution?

#### 2. Impact:

- a. To what extent is there compelling Proof of Concept evidence demonstrating the innovation's impact on key outcome(s) related to the area(s) of focus in a controlled or limited setting? **Note: Those without sufficient and relevant proof-of-concept evidence are strongly advised not to apply for Transition to Scale funding.**
- b. How well is the proposed solution designed to improve the lives of unserved or underserved people within the affected population group, as outlined in Section 2 of the Funding Opportunity, or a subset of this population?
- c. How clear and robust are the learning agenda and MEL (monitoring, evaluation, and learning) plan? How well would they enable the team to draw the appropriate conclusions, including impact on selected priority outcomes (as outlined in Section 2 of the Funding Opportunity), by the end of the funding period?
- d. How strong is the potential for the proposed solution to contribute to or influence policy or systems-level change in the target sector?

#### 3. Execution Plan:

- a. To what extent does the proposed innovation apply to, as well as include appropriate and meaningful involvement of the affected population?
- b. How feasible and reasonable is the proposed scope of work for positioning the innovator to achieve significant progress on its path to scale and sustainability in their defined context(s)?
- c. What stakeholder commitments and partnerships are in place to support a long-term path to scale and sustainability?

#### 4. Project Team:

- a. To what extent are the project team and collaborators meaningfully connected to and/or have lived experience in relation to the populations and communities they seek to serve through this innovation?
- b. Are the Project Lead, key team members and/or collaborators appropriately trained, experienced and positioned to carry out the implementation and assessment of the proposed work to achieve impact, sustainability and scale in their target setting(s)?

## Appendix D: Additional terms

### A. Submission Materials and Privacy Notice

When you apply to Nexa, everything you submit in your proposal — including innovation project details and other project related materials — falls under your agreement with the Nexa partners in this Funding Opportunity. We may share these materials with our funding partners, and the public. To support our evaluation process and share the work of projects we fund, we and our funding partners may use, reproduce, and publish your materials in any form. Submitting your application means you agree to these terms, including waiving any personal rights over the submitted content. Please note that we cannot provide you with any assurance of confidentiality for submitted content. Finally, any personally identifiable information that you submit will be treated under the terms of the Privacy Notice below.

#### **The following terms apply to all submitted content:**

To help us in the evaluation and analysis of the organizations and projects in submitted applications, all proposals, documents, communications, and associated materials, such as stories and other descriptions of your work, submitted to Nexa through Grand Challenges Canada (collectively “Submission Materials”) may be shared with the Nexa partners, our funding partners, and the public. By submitting any Submission Materials to Grand Challenges Canada, each applicant grants to Grand Challenges Canada and the other Nexa partners and their funders a worldwide, perpetual, irrevocable, nonexclusive, non-commercial, free of charge and royalty free license to use, reproduce, adapt, modify, improve, develop, translate, publish, disseminate, distribute, communicate to the public by telecommunication and display the Submission Materials, in whole or in part, in any form, media, or technology now known or later developed, including the right to authorize others to do such acts and the right to sublicense such rights to others, on the same terms. Each applicant also waives any and all moral rights that it has in the Submission Materials in favour of Grand Challenges Canada and the other Nexa partners, our funders, and each of their sub-licensees, successors, representatives, assigns, employees, and agents.

The proposals will be subject to external review by independent subject-matter experts, advisors, and potential co-funders (the results of which will be confidential), in addition to analysis by our staff. Please be advised that a copy of the external reviews for each submitted proposal, as well as the submission and due diligence materials, including personal information, will be shared with the relevant Nexa partner staff and may be disclosed to the Nexa partners’ decision-making bodies, and our respective partners and any funders and co-funders.

Please carefully consider the information included in the Submission Materials. If you have any concerns about the disclosure of confidential or proprietary information (including information related to inventions), please advise us as soon as possible and in any event prior to disclosure of such materials to Nexa through Grand Challenges Canada. We also recommend you consult with your legal counsel and take any steps you deem necessary to protect your intellectual property. You may wish to consider whether such information is critical for evaluating the submission and whether more general, non-confidential information may be adequate as an alternative for these purposes.

The Nexa partners will attempt in good faith to respect the confidentiality of information that is received in Submission Materials, if it is clearly marked "Confidential". Nonetheless, notwithstanding your characterization of any information as "Confidential", the Nexa partners reserve the right to disclose all information contained in Submission Materials as may be required by law and as is necessary to potential funders, partners, advisors, and external reviewers (such as government entities) to evaluate them and the manner and scope of potential funding, consistent with appropriate regulations and their internal guidelines and policies. The Nexa partners expressly disclaim any and all liability that may arise from disclosure of confidential information contained in Submission Materials.

#### *Privacy Notice*

In order to conduct due diligence and audits, and to manage and monitor the performance of a funding agreement, Grand Challenges Canada may collect personal information (such as names, addresses, employment history, criminal and other legal checks where legally permissible) about some of a successful applicant's directors and officers, employees, project lead(s), and others engaged on the project before and during the course of the funding agreement. Some of this personal information is collected for the purpose of complying with applicable legal and policy requirements that apply to Grand Challenges Canada and our funders in order to provide the funding and services by Grand Challenges Canada under a funding agreement. Refusing to provide information that Grand Challenges Canada needs in order to conduct required legal and contractual due diligence may impact the Nexa Partners' ability to provide such funding and services and may result in not being able to enter into a funding agreement with you or early termination of a signed funding agreement.

**By applying to this Funding Opportunity, you consent to Grand Challenges Canada disclosing any personal information you submit or that we collect to the other Nexa partners and funders for review, funding decisions, applicant communications, funding agreements, administration, reporting, audit and other related purposes.**

Grand Challenges Canada's [Privacy Policy](#) explains how Grand Challenges Canada collects, use, discloses, and protects the personal information that it collects and receives.

By submitting any personal information about others, you represent and warrant that you are authorized to do so. If applicable law allows or requires you to supply the information without authorization, you represent and warrant that you have abided by that law and that it allows Grand Challenges Canada to receive and disclose the information under the [Privacy Policy](#) without any further action on the part of Grand Challenges Canada. You agree to indemnify and hold harmless Grand Challenges Canada against any failure by you to comply with the requirements set out in the [Privacy Policy](#).

### **B. Warranty**

By providing any Submission Materials, applicants represent and warrant to the Nexa partners that they have the right to provide the information submitted.

### **C. Funding Opportunity Terms**

This Funding Opportunity is part of a discretionary funding initiative. Submission of an application does not create a contractual relationship between the applicant and Grand Challenges Canada or another Nexa partners to advance funding to any applicant and/or enter into any contractual relationship.

Furthermore, all applicants acknowledge that the initiative may evolve and that all terms in this Funding Opportunity are subject to change. In particular, Grand Challenges Canada reserve the right, in its sole discretion and without notice, to:

1. Cancel or pause this Funding Opportunity at any time and for any reason.
2. Amend and re-issue the Funding Opportunity at any time and for any reason. This Funding Opportunity is valid commencing on June 22, 2026, and supersedes any previous Funding Opportunity of this nature. The terms and conditions of this Funding Opportunity apply to all applications submitted from June 22, 2026, going forward and may be replaced by a revised Funding Opportunity in the future. We recommend checking for any revisions to the Funding Opportunity prior to the submission of your application materials.
3. Accept or reject any application that is non-conforming because it does not meet the eligibility criteria, does not comply with the application instructions, and/or does not comply with the instructions for allowable costs.
4. Not award an application based on performance on previous project(s) or based on the award of funding to the applicant for the same or similar research by one of our partners or collaborating institutions.
5. Disqualify any application at any stage where there is an indication that the proposal was, in any way, plagiarized.
6. Accept or reject any or all applications at any stage for any reason, regardless of an application's rating based on the evaluation criteria, with or without providing an explanation.
7. Award fewer awards than expected.

8. Award applications with different funding amounts, different durations and/or different conditions than set out in this Funding Opportunity.
9. Verify any information provided by applicants through independent research or by contacting third parties deemed to be reliable by Grand Challenges Canada and use that information to inform Grand Challenges Canada's funding decision.
10. Modify eligibility and evaluation criteria, including but not limited to criteria assessed at the triage stage, at any time.
11. Use photos, video, stories, or other materials submitted by applicants on Grand Challenges Canada's Fluxx portal or otherwise for public engagement by the Nexa partners.
12. Not provide critiques or feedback regarding the reasons a proposal was or was not selected.
13. Design funding awards to link to possible funding partners, including private sector investors.

#### **D. Costs**

No payment will be made for costs incurred in the preparation and submission of an application in response to the Funding Opportunity. Costs associated with preparing and submitting an application, as well as any other costs incurred by the applicant associated with the evaluation of the application, are the sole responsibility of the applicant.

#### **E. Governing Law**

This Funding Opportunity shall be governed by and construed in accordance with the laws of the Province of Ontario and the federal laws of Canada applicable therein. Each applicant agrees that this and all disputes, actions or proceedings relating to this Funding Opportunity whether as to interpretation, validity, performance or otherwise, shall be subject to the exclusive jurisdiction of the courts of the Province of Ontario and each applicant and Grand Challenges Canada irrevocably attorn to the jurisdiction of the courts of such province. The governing laws of any resulting funding agreement will be determined by the Nexa partner.

#### **F. Risk Management, Safety, Anti-Terrorism, Anti-Corruption, Anti-Bribery**

Proposals must comply with all relevant Canadian and international anti-terrorism, anti-corruption, and anti-bribery legislation. Any person or organization named in Canadian, US, UK or United Nations Security Council sanctions lists will not be funded. We may add to this list as more Nexa partners and funders join.

Proposals for projects that include work in insecure locations, must detail how they'll manage the safety and security risks faced by people and assets. If selected for funding, during negotiations applicants will be required to explain how they will avoid corruption and the diversion of funding from its intended purpose.

For example, during negotiations applicants will be asked to provide a description of the organization's policies and procedures to address conflicts of interest and financial or other irregularities, including without limitation, adequate procedures:

- Requiring the organization and its representatives to declare any personal or financial interest in any matter concerning the funded activities, and exclude that individual from the matter concerned
- Identifying steps to investigate an irregularity
- A timely and appropriate plan of action to recover any funds that have been subject to proven fraud.

During negotiations, applicants will also be required to include a description of the organization's policies and procedures to adequately implement internal controls for preventing bribery, corruption, fraud, and other situations of misuse of funds.

### **G. Activities & Deliverables**

Projects funded under this effort will be expected to engage in the following activities and provide related deliverables.

1. Performance reporting, focused on use of funds and outcomes achieved.
2. Robust monitoring, evaluation and learning (MEL). The Nexa partners require all funded projects to report on the activities, outcomes and impact resulting from their projects.
3. A final report that accounts for financial spending and that captures a clear assessment of the impact of the project, including progress towards ensuring access to the innovation to those most in need and widespread dissemination of generated knowledge.
4. Continued post-investment updates on management of intellectual property rights in supported innovations.
5. Funded projects will be expected to provide communications materials, including project photos, videos, and testimonials, to support learning, knowledge sharing, and public communications related to the innovation.

The full list of activities and deliverables will be reflected in the funding agreement with the contracting Nexa partner.

### **H. Funder Compliance Terms**

Some or all of the funds advanced to a successful applicant will be made available to the Nexa partners in connection with funding agreements between these partners and certain funder(s). The Funding Agreement with a successful Applicant will flow down certain of these funder(s) compliance obligations that apply to all recipients of funds, including any grantees.

The Applicant will be required to acknowledge that it has read and understood these funder(s) compliance obligations and will make the representations, warranties, declarations, and guarantees, and agree to comply with the terms and conditions, contained in the applicable funder(s) compliance terms as a condition of receiving funding from the contracting partner.

## **I. Financing Terms**

### **ELIGIBLE COSTS**

Selected innovators will be required to comply with the relevant cost directive(s). The relevant cost directive(s) will be shared later in the selection process based on the contracting Nexa partner(s).

### **TERMS OF DISBURSEMENT**

Initial advances and subsequent payments will be negotiated with the contracting Nexa partner(s).

### **AUDIT**

Project expenses will be subject to audit by the contracting Nexa partner(s) as stipulated within the funding agreement specified with the selected innovator.

## **J. Guidance on the use of generative AI in our funding processes**

### *Use of Artificial Intelligence by Applicants in Preparation of Funding Proposals*

The Nexa partners recognize that generative artificial intelligence (AI) may be a helpful tool for applicants in the preparation of funding proposals, including to assist non-native English and French speakers, to simplify complex ideas, and to otherwise refine the information to be submitted.

It is, however, the Nexa partners' expectation that applicants and their affiliated institutions propose original ideas. It is also the responsibility of these applicants and institutions to ensure that information included in their applications is true, accurate, and complete, and that, where relevant, sources are appropriately acknowledged and referenced. Applicants should be aware that using generative AI may lead to the presentation of information without proper recognition of authorship or acknowledgement.

### *Use of Artificial Intelligence by Nexa partners in Application Processing*

Applicants are advised that the Nexa partners, or their agents, partners or funders, may use AI tools to assist in the processing, analysis, or evaluation of applications submitted in response to this Funding Opportunity.

These tools may be used, for example, to support administrative tasks such as organizing application materials, identifying relevant information, or conducting preliminary assessments against published evaluation criteria. The Nexa partners may also use these tools to assess the use of generative AI by applicants.

The use of AI tools is intended to support — not replace — human decision-making. Human oversight is maintained throughout the evaluation process to ensure that assessments are fair, consistent, and aligned with the objectives of this funding opportunity.

# nexa

climate x health

